

User Guide

TCL 30_{V5G}



Note:

This is a user manual for TCL 30V 5G (TCL-T781S and TCL-T781SPP).

Table of Contents

| | | |
|----------|--------------------------------------|-----------|
| 1 | Your mobile | 3 |
| 1.1 | Keys and connectors..... | 3 |
| 1.2 | Setting up your phone..... | 6 |
| 1.3 | Home screen..... | 9 |
| 1.4 | Text input..... | 17 |
| 2 | Multimedia applications | 20 |
| 2.1 | Camera..... | 20 |
| 2.2 | Gallery..... | 25 |
| 2.3 | Music..... | 29 |
| 3 | Apps and features | 31 |
| 3.1 | Phone..... | 31 |
| 3.2 | Contacts..... | 37 |
| 3.3 | Message+..... | 41 |
| 3.4 | Calendar..... | 44 |
| 3.5 | Clock..... | 45 |
| 3.6 | Calculator..... | 48 |
| 3.7 | NXTVISION..... | 49 |
| 3.8 | Other applications..... | 49 |
| 3.9 | Google applications..... | 49 |
| 4 | Settings | 52 |
| 4.1 | Wi-Fi..... | 52 |

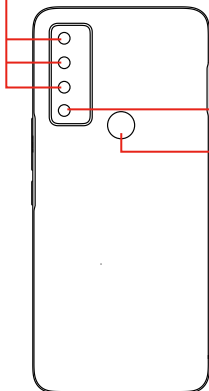
| | | |
|-----------|--|-----------|
| 4.2 | Bluetooth..... | 53 |
| 4.3 | Network & internet..... | 55 |
| 4.4 | Connected devices..... | 57 |
| 4.5 | Home screen & lock screen..... | 59 |
| 4.6 | Display..... | 60 |
| 4.7 | Sound & vibration..... | 61 |
| 4.8 | Notifications | 62 |
| 4.9 | Button & gestures..... | 62 |
| 4.10 | Advanced features..... | 62 |
| 4.11 | Smart Manager | 64 |
| 4.12 | Digital Wellbeing & parental controls..... | 64 |
| 4.13 | Security & biometrics | 64 |
| 4.14 | Location..... | 65 |
| 4.15 | Privacy..... | 66 |
| 4.16 | Apps | 66 |
| 4.17 | Storage | 66 |
| 4.18 | Users & accounts | 66 |
| 4.19 | Google..... | 66 |
| 4.20 | System update..... | 67 |
| 4.21 | Accessibility..... | 67 |
| 4.22 | System..... | 67 |
| 5 | FOTA upgrade..... | 69 |
| 6 | Accessories..... | 70 |
| 7 | Licenses | 71 |
| 8 | 1 YEAR LIMITED WARRANTY..... | 72 |
| 9 | Troubleshooting..... | 73 |
| 10 | Specifications..... | 79 |

1 Your mobile

1.1 Keys and connectors



Rear camera



LED Flash

Fingerprint sensor



Back key

- Touch to go back to the previous screen, or to close a dialog box, options menu, the notification panel, etc.



Home key

- Touch to return to the Home screen from any other application or screen.
- Touch and hold to open Google Assistant. You can get help such as getting directions and restaurant information based on the content detected on the screen.



Recent apps

- Touch to switch between recently opened individual app activities and documents.



Power key (right of the device)

- Press: Lock the screen/Light up the screen
Note: Additional shortcuts and customizable settings are available at **Settings > Button & gestures > Power key**.
- Press and hold: Show the popup menu to select from **Power off/Restart/Airplane mode/Cast**.
- Press the **Power** key and **Volume down** key at the same time to take a screenshot.
- Press and hold the **Power** key for at least 10 seconds to force reboot.



Volume up/down

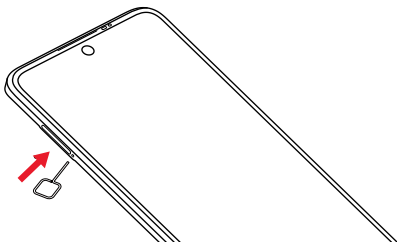
- In call mode, adjusts the earpiece or headset volume.
- In Music/Video/Streaming mode, adjusts the media volume.
- In general mode, adjusts the media volume.
- Mutes the ringtone of an incoming call.
- In camera preview mode, press the **Volume up** or **Down** key to take a photo or press and hold to take burst shots. To set, touch **Camera > Settings > Volume button function**.

1.2 Setting up your phone

Your phone already has a SIM card installed. For an optimal wireless experience, use the SIM installed in your new phone.

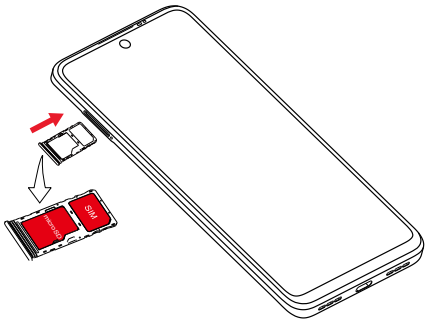
1. Insert the SIM/microSD card.

Step 1. If you need to replace the NANO SIM card and/or insert an optional microSD card, use the SIM tool provided in the box to open the SIM tray.



Step 2. Place the SIM card and/or microSD card into the tray, then slide the tray into the slot. It only fits one direction. Do not force into place. Keep the SIM tool in a safe place for future use.

Note: microSD™ cards are sold separately. Only use Nano SIM cards with your phone.



You must insert your SIM card to make phone calls. You do not need to power off your phone before inserting or removing the SIM card as this phone supports hot swap.

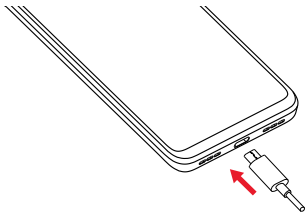


Your phone only supports nano-SIM cards. Do not attempt to insert other SIM types; otherwise this may cause damage to your phone.

2. Charge your phone.

Before turning on your phone, charge it fully.

Insert the small end of the USB cable into the phone. Insert the larger end into the charger and plug the charger into an outlet.



WARNING: Only use approved chargers with your device. Incompatible chargers or tampering with the charger port could damage your device and void the warranty.

3. Turn your phone on/off.

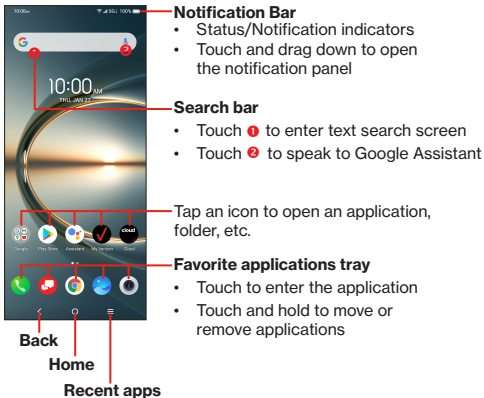
To turn your phone on, press and hold the **Power/Lock** button.

NOTE: The first time you turn on your phone, you may need to activate it. Follow the on screen instructions to set up your device.

To turn your phone off, press and hold the **Power/Lock** button, and tap **Power off** on the screen when it appears.

1.3 Home screen

You can bring all the items (applications, shortcuts, folders and widgets) you love or use most frequently to your Home screen for quick access. Touch the **Home** button to switch to the Home screen.



The Home screen is provided in an extended format to allow more space for adding applications, shortcuts etc. Slide the Home screen horizontally left and right to get a complete view.

Using the touchscreen

Touch



To access an application, touch it with your finger.

Touch and hold



To enter the available options for an item, touch and hold the item. For example. Select a contact in Contacts and touch and hold it. An options list will then appear.

Drag



Place your finger on the screen to drag an object to another location.

Slide/Swipe



Slide the screen to scroll up and down the applications, images, and web pages. You can slide the screen horizontally too.

Flick



Similar to swiping, but flicking makes it move quicker.

Pinch/Spread



Place two fingers on the screen surface and draw them apart or together to scale an element on the screen.

Rotate



Automatically change the screen orientation from portrait to landscape by turning the phone sideways to have a better screen view.

Status bar

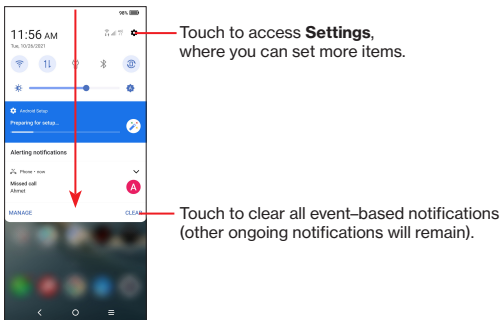
From the status bar, you can view both phone status (on the right side) and notification information (on the left side).

Drag down the status bar to view notifications and drag again to enter the quick settings panel.

Touch and drag up to close it. When there are notifications, they can be accessed by touching them.

Notification panel

When there are notifications, touch and drag down the Status bar to open the Notification panel to read more detailed information.

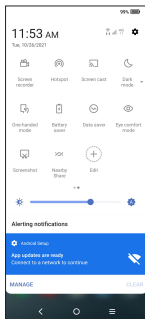
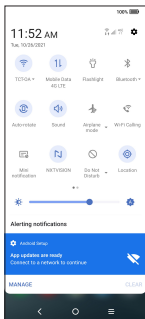


Quick settings panel

Drag down from the top of the screen twice to open the Quick settings panel.

You can enable or disable functions or change modes by touching the icons.

Touch the **Edit** icon  to customize your Quick settings panel.



Lock/Unlock your screen

To protect your phone and privacy, you can lock the screen with a pattern, PIN, password, registered fingerprint or Face Unlock⁽¹⁾.

To create a screen unlock, touch **Settings > Security & biometrics > Screen lock**.

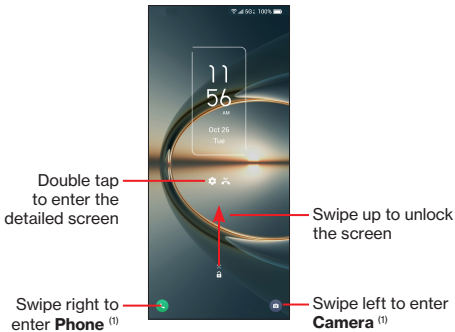
⁽¹⁾ Fingerprint and Face unlock may not be as secure as Pattern, PIN, or Password locks. We may use Fingerprint and Face unlock methods only for the purpose to unlock the phone. The data collected from you through such methods will be stored in your device and will not be disclosed to any third-party. You may delete your data anytime.

To lock the phone screen

- If your phone remains inactive for a period of time, it will automatically lock the screen and enter sleep mode to save power. Go to **Settings > Display > Sleep** and select a screen timeout period.
- You can also manually lock the screen by pressing the **Power** key once.

Swipe to unlock the screen

Press the **Power** key once to light up the screen, swipe up the screen to unlock the screen.



⁽¹⁾ Customized by touching **Settings > Home screen & lock screen > Lock screen shortcut**.

Enter a password to unlock the screen

Once the screen is turned on, swipe up the screen to display the password input panel. Then enter your lock screen password.

Use pattern unlock

Draw the same pattern you have set to unlock the screen.

Use Face unlock

- From the app list, touch **Settings > Security & biometrics > Face unlock**. Before using the face unlock, you need to set a pattern/PIN/password.
- Hold your phone 8 - 20 inches from your face. Position your face in the circular shown on the screen. For best results, we suggest that the Face Unlock is enrolled indoors and away from direct sunlight.
- Enable Face unlock when your screen turns on, otherwise you will have to swipe up on the screen first of all.

Use Fingerprint unlock

- For the best result, begin with the index finger on your dominant hand.
- Put your finger on the sensor and lift after you feel a vibration. Keep lifting your finger to add the different parts of your fingerprint.
- Follow these steps until fingerprints are fully registered.

Personalizing your Home screen


Add

You can touch and hold a folder, an application or a widget and drag the item to your preferred Home screen.

Reposition

Touch and hold an item and drag it to the desired position and then release. You can move items both on the Home screen and the Favorite tray. Hold the icon on the left or right edge of the screen to drag the item to another Home screen.

Remove

Touch and hold the item and drag it up to the top of the  remove icon, and release after it turns red.

Create folders

To improve the organization of shortcuts or applications on the Home screen and the Favorite tray, you can add them to a folder by stacking one item on top of another. To rename a folder, open it and touch the folder's title bar to input the new name.

Wallpaper customization

Touch and hold an empty area on the Home screen, then touch **Wallpapers** to customize wallpaper.

Widgets and recently used applications

Widgets

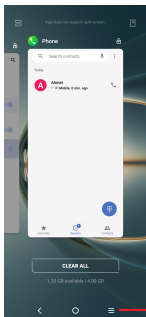
Touch and hold the empty area in the Home screen, then touch **Widgets** to display all widgets.

Touch and hold the selected widget and slide it to move to your preferred screen.

Recently used applications

To consult recently used applications, touch the **Recent apps** key.

Touch a thumbnail in the window to open the application.

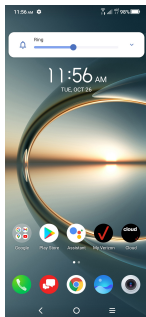


Recent apps

Touch one thumbnail and slide it up to close the application, slide it right/left to switch between the applications.

Touch **CLEAR ALL** at the bottom of the screen to close all the running applications.

Volume adjustment



Press the **Volume** key to adjust the Ring volume.

Touch the  icon to adjust Media, Alarm and Notification volume.

1.4 Text input

Using the Onscreen Keyboard

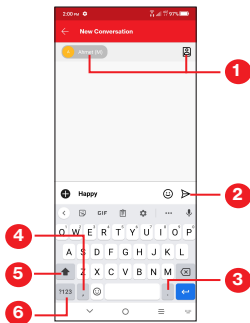
Onscreen Keyboard settings

Touch **Settings > System > Language & input**, touch the Virtual keyboard you want to set up and a series of settings will become available.

Adjust the Onscreen Keyboard orientation

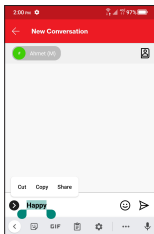
Turn the phone sideways or upright to adjust the onscreen keyboard orientation. You can adjust it by changing the settings (Touch on/off **Settings > Display > Auto-rotate screen**).

Android keyboard



- 1 Enter recipient numbers or select from contacts
- 2 Touch to send the message
- 3 Touch to insert a period. Touch and hold to select symbols
- 4 Touch to insert a comma
Touch and hold to access keyboard settings, insert an emoji, or view input options.
- 5 Touch to switch between «abc/Abc» mode
Touch and hold to switch to «ABC» mode
- 6 Touch to access the symbols and numbers keyboards

Text editing



You can edit text which you have entered.

- Touch and hold or double tap within the text you want to edit.
- Drag the tabs to change the amount of text to edit.
- The following options will appear: **Cut**, **Copy**, and **Share**.



You can also insert new texts if preferred

- Touch where you want to type, or touch and hold a blank area. The cursor will blink and the tab will appear. Drag the tab to move the cursor.
- If you have cut or copied any text, touch the tab to show the **Paste** and **Select all** option which allows you to complete pasting immediately.

2 Multimedia applications

2.1 Camera



Before using the camera, make sure that you remove the protective lens cover to avoid it affecting your picture quality.

Launch Camera

There are multiple ways to open the Camera app.

From the Home Screen

From the home screen, touch **Camera** .

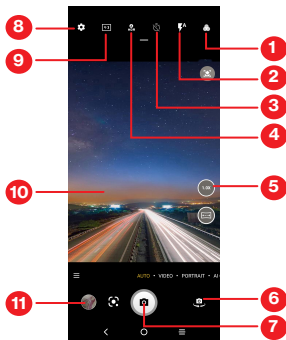
From the Lock Screen

When the screen is locked, press the **Power** key once to light up the screen, then swipe left on the camera icon in the lower right corner to open the camera.

Using a shortcut key

Simply double-press the **Power** key to open the camera.

To set, touch **Settings** > **Button & gestures** > **Power key** > **Quick launch camera**.





- 1 Select filters
- 2 **Flash mode:** Touch to turn on/off/auto the camera flash
WARNING: Keep a safe distance when using the flash. Do not point the flash toward people's or animals' eyes.
- 3 Take a timed photo
- 4 Take HDR photos
- 5 Zoom in/out
- 6 Switch between front/back camera
- 7 Take a photo
- 8 Touch to access settings
- 9 Picture size

10 Pinch fingers together to zoom out, or spread fingers apart to zoom in

11 View the photos or videos you have taken

To take a photo

The screen acts as the viewfinder. First, position the object or landscape in the viewfinder, touch the screen to focus if necessary. Touch  to capture. The photo will be automatically saved. You can also touch and hold  to take burst shots, the maximum number is 20.

To take a video

Touch **VIDEO** to change the camera mode to video.



Touch  to start video recording. Touch the left part of this icon

 to take a picture during video recording.

Touch the right part of this icon  to pause video recording

and touch  to continue. Touch  to stop recording. The video will be automatically saved.

Further operations when viewing a photo/video you have taken



- Slide left or right to view the photos or videos you have taken.
- Touch , then Gmail/Bluetooth/Messages/etc. to share the photo or video.
- Touch **Back button**  to return to **Camera**.

Modes and settings

Modes

Slide left or right to switch between modes.


- **AUTO:** Auto is the default mode for Camera.
- **VIDEO:** Touch to access video mode.
- **PORTRAIT:** Touch to create a depth of field effect. You can compose an image that highlights your subject while producing a gorgeously blurred background.
- **AI COLOR:** When shooting a portrait, this setting highlights the subject in color while removing color from the back ground of the photo.
- **PRO:** Pro camera mode lets you fine-tune parameters and gives you full control over ISO, WB exposure time, aperture, shutter speed and so on.



Touch  to access more modes. These modes can be moved to the main screen by touching .

- **HIGH PIXEL:** When capturing pictures the device will use the 50M rear camera or 16M front camera. The photos are larger and more detailed than pictures taken in auto mode. This mode works only in partially bright scenes, such as when the sun is shining.
- **PANO:** Touch to turn on the panorama function. Touch the shutter button to start taking a panoramic photo and move the phone steadily along in the direction indicated by the onscreen line. Once the progress bar are filled, the photo will be automatically saved. If the progress bar is not fully filled, touch the shutter button again to save the photo.
- **STOP MOTION:** Capture a number of photos of a certain scene, then convert them into a speeded-up video.
- **LIGHT TRACE:** Capture creative movements of light using a long exposure photograph.

- **SUPER MACRO:** Touch to access super macro mode. 1 to 3 inches is the best macro shooting distance.
- **SLO-MO:** Record special occasions and fast moving scenes, then play them back at a slow frame rate.

Settings


Touch  to set more options:

- **Photo size:** Touch to select photo size.
- **Video quality:** Touch to select video quality.
- **AI scene detection:** Once turned on, the camera will automatically identify the image content of a scene and categorize it accordingly. Many different scene categories are supported. This only works when using the main camera.
- **Calorie detection⁽¹⁾:** Turn on  to detect the calorie content of a captured object.
- **Smart guideline⁽¹⁾:** Touch to turn on/off. This feature provides AI-powered facial detection and composition guides for portrait shots. It only works when using the main camera.
- **Volume button function:** Touch to customize the Volume button to Shutter, Zoom or Volume when using camera.
- **Storage:** Touch to choose between phone and microSD™ card storage when an microSD™ card is inserted. The default is phone storage.
- **Save location information:** Turn on  to tag photos and videos with your location. This option is available when the GPS location service is enabled.
- **Shutter sound:** Touch to turn on/off shutter sound when capturing.
- **Watermark:** Touch to turn on/off Watermark.

⁽¹⁾ Only available when the AI scene detection is turned on.

- **Reset settings:** Touch to reset the camera to its factory default settings.


More options are available when you switch to using the front camera:

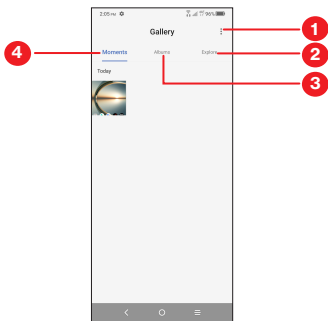
- **Face Beauty:** Touch to turn on/off. When activated, touch  to adjust skin smoothing and enhance coloring effects in portraits.
- **Mirror camera:** Touch to turn on/off.

2.2 Gallery.....



Gallery acts as a media player for you to view photos and play videos. In addition, a set of further operations to pictures and videos are available for selection.

To view the photos you have taken, touch  from the Home screen.



1 Tap to access more options

2 Explore

Explore collects photos into groups making them more easy to find

3 Albums

Photos, videos, screenshots, etc. are all automatically grouped in Albums

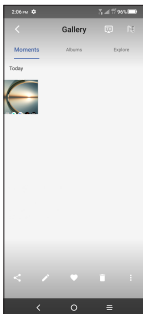
4 Moments











View the photos/videos you have just taken

Working with pictures

You can work with pictures by rotating or cropping them, sharing them with friends, setting them as a contact photo or wallpaper, etc.

Find the picture you want to work on, and touch the picture in the full-screen picture view.

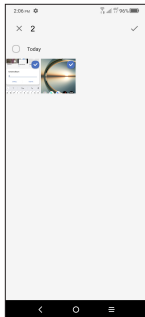
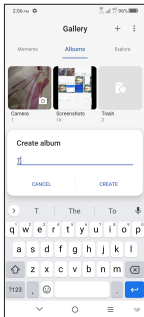




- Touch  to share the picture.
- Touch  to edit the picture.
-  Select **Filters**.
-  **Crop, Rotate** or **Mirror** the picture.
-  Draw the picture.
-  Adjust the picture color.
-  Touch to set **Dehaze, Object eraser** and **Sky**.
- Touch  to set the picture as your favorite.
- Touch  to delete the picture.
- Touch  > **Set as** to set the picture as a Contact photo or Wallpaper.

Album management

When there are many pictures and videos, you can manage your albums for convenient viewing.


Create an album




Tap  to create and name a new album. Select the pictures or videos you want to include in it by tapping  to copy or move them.

Move/copy pictures or videos


Touch and hold the picture(s) or video(s) you want to move/copy.

Touch  > **Copy to album/Move to album**, then select the album that you want to move to/copy to.


Delete or recover pictures or videos

Touch and hold the picture(s) or video(s) you want to delete, touch  > **DELETE**.

Deleted items will be retained in the **Trash** album for 30 days, after which they will be permanently deleted. To permanently delete them within this period, find the picture(s) or video(s) in **Trash** and touch and hold to delete.

To recover the picture(s) or video(s) within this period, touch and hold the picture(s) or video(s) in **Trash** and touch  to recover.

Hide album ⁽¹⁾

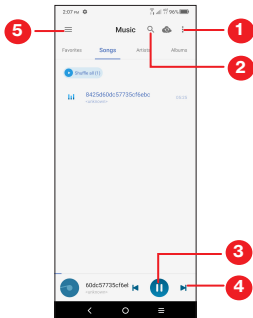
Touch and hold the album you want to hide, touch  > **MOVE**. The album contents will be hidden from **Moments**.

2.3 Music



You can play music files stored on your phone or microSD™ card.

To play a music file, swipe up on the Home screen, then touch Music



⁽¹⁾ Default albums such as **Camera**, **Videos**, **Screenshots**, etc. can't be hidden or moved.

- 1 More options
- 2 Search for a song
- 3 Play or pause
- 4 Play the next song
- 5 Music settings



While playing songs with Music, the operation of pause, play or skip is still available even if the screen is locked.

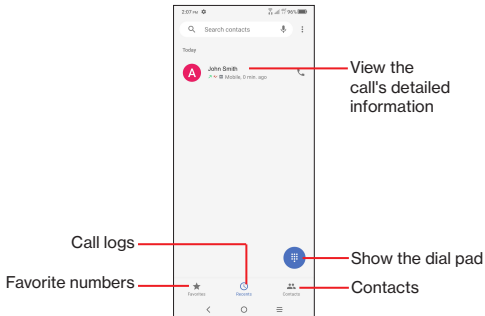
3 Apps and features

3.1 Phone

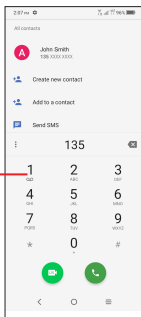



Making a call

To make a call, touch  in the Favorites tray.





Touch and hold to access voicemail





Enter the desired number from the dial pad and touch  to place the call or select a contact from **Contacts** or **Call logs** by sliding or touching tabs, then make the call.

The number you entered can be saved to **Contacts** by touching **Create new contact** or **Add to a contact**.


If you make a mistake, you can delete the incorrect digits by touching .

To hang up a call, touch .

International call

To dial an international call, touch and hold  to enter "+", then enter the international country prefix followed by the full phone number and touch .




Emergency call

If your phone has network coverage, dial the emergency number and touch  to make an emergency call. Depending on your network and country this could even work without a SIM card and without typing in the SIM PIN code.

Answering or rejecting a call



When you receive a call:

- Press **ANSWER**, or swipe up the icon  to answer;
- Press **DECLINE**, or swipe down the icon  to reject;
- Swipe up the icon  to reject the call by sending a preset message.

Calling your voicemail

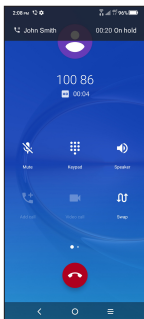
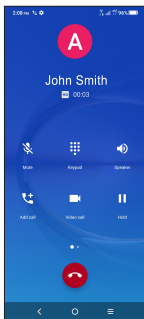
Your voicemail is provided by your network to avoid missing calls. It works like an answering machine that you can consult at any time.

To access your voicemail, touch and hold **1**.
Q.O

If you receive a voicemail, **Q.O** appears on the Status bar. Open the Notification panel and touch **New voicemail**.

During a call

To adjust the volume during a call, press the **Volume up/down** key.





End the current call.



Touch to mute the current call. Touch this icon again to unmute the call.



Display the dial pad.



Touch to activate the speaker during the current call. Touch this icon again to deactivate the speaker.



Make another call.



Make a video call.



Merge calls to start a conference call.



Swap the calls.




To avoid accidental operation of the touchscreen during a call, the screen will be locked automatically when you put the cellphone close to your ear; and it will be unlocked when the cellphone is taken away from your ear.

Managing multiple calls





With this phone you can handle multiple calls at the same time.

Swap calls


When you accept two calls, touch the  icon to switch between two lines. The current call will be put on hold and you are able to join the other call.

Conference calls


You can set up a conference call as follows.

- Place a call to the first participant of the conference call.
- Touch  to add another call.
- Enter the phone number of the person you want to add to the conference and touch . You can also add participants from **Call logs** or **Contacts**.
- Touch  to start the conference.
- Touch  to end the conference call and disconnect all callers.

Call settings

Touch  from the **Phone** screen, then touch **Settings** to set phone and contact settings.

Call log

You can access your call logs by touching  from the **Phone** screen to view missed calls, outgoing calls and incoming calls.

Touch one call to view information or further operations. You can launch a new call, send a message to the contact or number, or view detailed information of the call.

To delete the call history of a selected contact or number, touch and hold the contact and choose **Delete**.

3.2 Contacts.....

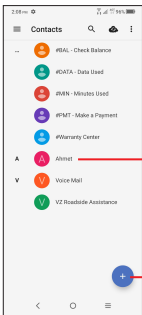


Contacts enables quick and easy access to the contact you want to reach.

You can view and create contacts on your phone and synchronize these with your Gmail contacts or other applications on the web or on your phone.

Consult your Contacts

To see your contacts, touch  from the App drawer.



- Touch to open the Quick contact panel
- Touch and hold to share or delete the selected contact

Add new contact

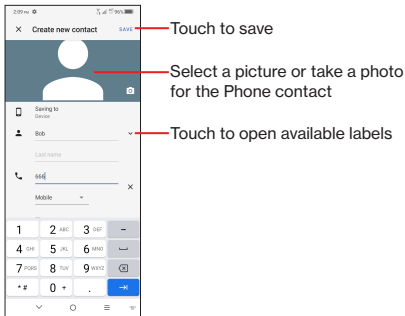


Deleted contacts will also be removed from other applications on the phone or web the next time you synchronize your phone.


Adding a contact


Touch  in the contact list to create a new contact.

You are required to enter the contact's name and other contact information. By scrolling up and down the screen, you can move from one field to another.



Add to/remove from Favorites ⁽¹⁾

To add a contact to favorites, you can touch a contact to view details then touch  to add the contact to favorites.

To remove a contact from favorites, touch  on the contact details screen.

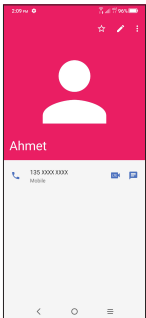
⁽¹⁾ Phone and Gmail contacts can be added to favorites.




Editing your contacts

To edit contact information, touch  in the contact details screen. When finished, touch **Save**.

Using the Quick contact panel

Touch a contact to open the Quick contact panel.




- Touch  or the number to make a call.
- Touch  to send a message.
- Touch  to make a video call.

The icons available on the Quick contact panel depend on the information you have for the contact and the applications and accounts on your phone.


Sharing contacts

You can share a single contact or contacts with others by sending the contact's vCard to them via Bluetooth, Gmail, etc.

- From the Contacts screen, touch and hold a contact and touch .
- Select the application to perform this action.

Accounts

Contacts, data or other information can be synchronized from multiple accounts, depending on the applications installed on your phone.


To add an account, touch  from the contacts list and touch **Settings > Accounts > Add account**, or from the home screen, touch **Settings > Users & accounts > Add account**.

You are required to select the kind of account you are adding, like gmail, yahoo, etc.

As with any other account setup, you need to enter detailed information, like username, password, etc.

You can remove an account and all associated information from the phone. Touch the account you want to delete, touch **Remove account**, then confirm.

Auto-sync

On the **Accounts** screen, turn on **Automatically sync data** . When activated, all changes to information on the phone or online will be automatically synchronized with each other.


3.3 Message+

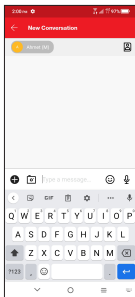
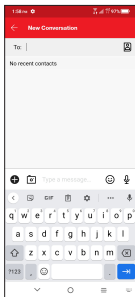


Writing a new message


You can create, edit, send and receive SMS and MMS with this phone.

To access Message+, touch  from the App drawer.

On the message list screen, touch  to write text/multimedia messages.



Sending a text message

- To add recipients, enter a mobile phone number or select a contact in the **To** bar.
- Touch the **Type a message** bar to enter the text of the message.
- When finished, touch  to send the text message.






Specific letters (accented) will also increase the size of the SMS. This may cause multiple SMS to be sent to your recipient.


Sending a multimedia message

MMS enables you to send video clips, images, photos, animations, slides and sounds to other compatible mobiles and e-mail addresses.

An SMS will be converted to MMS automatically when media files (image, video, audio, slides, etc.) are attached or subject or email addresses are added.

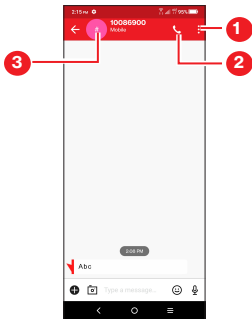
- To send a multimedia message, enter the recipient's phone number in the **To** bar.
- Write the text of the message in the **Type a message** bar.
- Touch  to give access to your location, send a voice message or attach files.
- Touch  to take a photo/video or attach a photo/video you have taken.
- When finished, touch  to send the multimedia message.

Manage messages


When receiving a message,  will appear on the Status bar as a notification. Drag down the Status bar to open the Notification panel. Touch the new message to open and read it. You can also access the **Message+** application and touch the message to open it.

Messages are displayed as a conversation.

Touch a message to enter the message composing screen:



- 1 Tap for more options
- 2 Tap to call the number
- 3 Tap to save the number to Contacts or view the contact details if the number has been saved

To adjust message settings, touch  and select **Settings** on the message list screen.

3.4 Calendar



Use **Calendar** to keep track of important meetings, appointments, etc.



To view the calendar and create events, open the Google apps folder from the Home screen, then touch **Calendar**.

Multimode view

You can display the Calendar by **Schedule, Day, 3 days, Week, or Month**, touch  to select.



To create new events

You can add new events from any Calendar view.


- Touch .
- Fill in all required information for this new event. If it is a whole-day event, you can turn on **All-day** .
- Invite guests to the event. Enter the email addresses of the guests you want to invite with commas to separate. The guests will receive an invitation from Calendar and Email.
- When finished, touch **Save** at the top of the screen.

To quickly create an event from the Day, 3 days and Week view screens, touch an empty spot to select a target area, then touch again to create a new event.

To delete or edit an event

To delete or edit an event, touch the event to enter its details screen. Touch  to edit the event, or touch  > **Delete** to delete.

Event reminder

If a reminder is set for an event, the upcoming event icon  will appear on the Status bar as a notification when the reminder time arrives.

Touch and drag down the Status bar to open the notification panel, touch an event name to view the Calendar notification list. Touch the **Back** button to keep the reminders pending in the Status bar and the notification panel.

3.5 Clock






Your mobile phone has a built-in clock.

To view the current time, swipe up the Home screen, then touch **Clock**, or tap time on the Home screen to access it.


Alarm

From the Clock screen, touch **Alarm** to enter.

- Turn on  to enable the alarm.
- Touch  to add a new alarm, touch  to save.
- Touch a currently existing alarm to enter the alarm editing screen.
- Touch **DELETE** and confirm to delete the selected alarm.

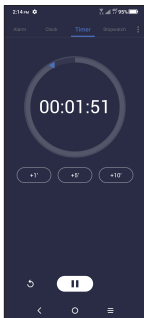
Clock




To view the date and time, touch **Clock**.

- Touch  to add a city from the list.

Timer

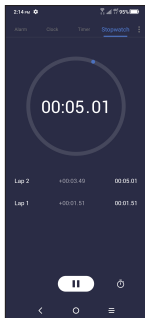
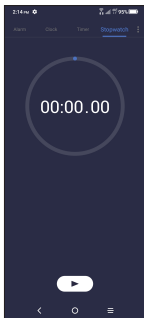
From the Clock screen, touch **Timer** to enter.







- Touch the provided time to start the countdown directly. Or
- Set the time. Touch  to start the countdown.
- Touch  to pause.
- Touch  to reset.

Stopwatch

From the Clock screen, touch **Stopwatch** to enter.




- Touch  to start the Stopwatch.
- Touch  to pause.
- Touch  to reset.
- Touch  to share.

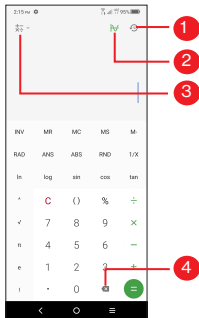
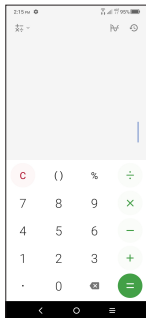
Adjust Clock settings

Touch  to access Clock and Alarm settings.

3.6 Calculator.....



To solve mathematical problems with **Calculator**, swipe up from the home screen, then tap .



- 1 Calculation history
- 2 Touch to switch between Basic calculation and Scientific calculation
- 3 For more options about **Currency** and **Unit** conversion
- 4 Touch to delete digits one by one

3.7 **NXTVISION**.....



NXTVISION provides image enhancement, video & game enhancement and other screen functions, helping your screen to come alive with a wonderful visually enhanced experience.

3.8 **Other applications**

The previous applications in this section are preinstalled on your phone. Install additional applications using Google Play Store.

3.9 **Google applications**

Google apps are preinstalled on your phone to improve work efficiency and help you enjoy life.

This manual briefly introduces the apps. For detailed features and user guides, refer to the related websites or the introduction provided in the apps.

You are recommended to register with a Google account to enjoy all the functions.

Chrome

A web browser with which you can surf the internet.

Your bookmarks, browsing history, and settings across all devices with the browser installed can be synchronized with your Google account.

Gmail

Google's web-based email service, Gmail, is configured when you first set up your phone. With this application you can send and receive emails, manage emails by labels, archive emails, etc. Emails can be automatically synchronized with your Gmail account.

Maps

Google Maps offers satellite imagery, street maps, 360° panoramic views of streets, real-time traffic conditions, and route planning for traveling by foot, car, or public transportation. By using this application, you can find your own location, search for a place, and get suggested route planning for your trips.

YouTube

YouTube is an online video-sharing application where users can upload, view, and share videos. Available content includes video clips, TV clips, music videos, and other content such as video blogging, short original videos, and educational videos. It supports a streaming function that allows you to start watching videos almost as soon as they begin downloading from the internet.

Play Store

Serves as the official app store for the Android operating system, allowing users to browse and download applications and games. Applications are either free of charge or at a cost.

In Play Store, search for the app you need, download it and then follow the installation guide to install the app. You can also uninstall, update an app, and manage your downloads.

Duo

A video chat mobile app.

With phone numbers verified, users can easily video call people from their contact list.

Photos

Google Photos stores and backs up your photos and videos. It also automatically analyzes photos and organises them into groups, so that you can quickly find the photos you need.

Google Pay

Google Pay allows you to make contactless payment with your phone, which is the fast, simple and safe way to pay in millions of places - in stores, online, and more.

Google Assistant


Long press the **Home** button to quickly ask for help, check the news, make a phone call, and more.


File Manager

Files displays all data stored on the phone, including both external microSD™ card and internal storage, such as applications, media files downloaded from Google Play Store, YouTube or other locations; Videos, pictures or audios you have captured; other data transferred via Bluetooth, USB cable, etc.

4 Settings.....




To go to **Settings**, swipe up from the Home screen or swipe left and then tap **Settings** .

You can also swipe down from the notification panel and touch .

4.1 Wi-Fi

You can connect to the internet when your phone is within range of a wireless network. Wi-Fi can be used on your phone even without a SIM card inserted.

To turn Wi-Fi on and connect to a wireless network

- Touch **Settings > Wi-Fi**.
- Turn on .
- Once Wi-Fi is turned on, detected Wi-Fi networks are listed.
- Touch a Wi-Fi network to connect to it. If the network you selected is secured, you are required to enter a password or other credentials (you should contact the network carrier for details). When finished, touch **CONNECT**.

To add a Wi-Fi network

When Wi-Fi is on, you can add new Wi-Fi networks according to your preference.

- Touch **Settings > Wi-Fi > Add network**.
- Enter the name of the network and any required network information.
- Touch **Connect**.

To forget a Wi-Fi network

The following steps prevent automatic connection to networks which you no longer wish to use.

- Turn on Wi-Fi, if it's not already on.
- On the Wi-Fi screen, touch the name of the saved network.
- Touch **FORGET** in the dialog that opens.

4.2 Bluetooth

Bluetooth is a short-range wireless communication technology that you can use to exchange data, or connect to other Bluetooth devices for various uses.

To turn on Bluetooth

- Touch **Settings > Bluetooth**.
- Turn on  .

Your device name will appear on screen.

To rename your device


- Touch **Settings > Bluetooth**.
- Touch **Device name**.
- Enter a name, and touch **RENAME** to confirm.

To pair/connect your phone with a Bluetooth device

To exchange data with another device, you need to turn Bluetooth on and pair your phone with the Bluetooth device with which you want to exchange data.

- Touch **Settings > Bluetooth > + Pair new device**.
- Touch a Bluetooth device you want to pair your phone with in the list.
- In the dialog that pops up, touch **PAIR** to confirm.
- If the pairing is successful, your phone will be connected to the device.

To unpair from a Bluetooth device

- Touch  beside the device you want to unpair from.
- Touch **FORGET** to confirm.

Super Bluetooth

Once two or more BT devices are connected, Super Bluetooth will be enabling you to adjust the volume and audio balance of each BT device, and calibrate a connected speaker to better synchronize sound with the video on your smartphone.

To get a better listening experience, we suggest that your device connects with up to four audio devices simultaneously.



A calibration reminder will pop up every time a connected Bluetooth speaker changes. A third or fourth Bluetooth device can only be added if you are connected to a 5GHz Wi-Fi network.

4.3 Network & internet

Mobile network

You can set **Roaming**, **Network mode**, **VoLTE**, **Network extenders** and **Access Point Names** etc. in this menu.


Data usage

The first time you turn on your phone with your SIM card inserted, it will automatically configure your network service.

Data saver

By enabling Data saver, you can reduce data usage by preventing some apps from sending or receiving data in the background.

Mobile data


If the network is not connected, you can turn on  **Mobile data**.

If you do not need to transmit data on cellular networks, turn off **Mobile data** to avoid incurring significant charges for data use on local carrier cellular networks, particularly if you do not have a cellular data agreement.



Data usage is measured by your phone, and your carrier may count differently.

Airplane mode

Turn on  **Airplane mode** to simultaneously disable all wireless connections including Wi-Fi, Bluetooth and more.

Tethering & Mobile Hotspot

To share your phone's data connection via Wi-Fi, Bluetooth, USB and Ethernet tethering, or as a mobile hotspot, go to **Settings > Network & internet > Tethering & Mobile Hotspot** to activate these functions.

To rename or secure your mobile hotspot

When your mobile hotspot is activated, you can rename your phone's Wi-Fi network (SSID) and secure its Wi-Fi network.

- Touch **Settings > Network & internet > Tethering & Mobile Hotspot > Mobile Hotspot**.
- Touch **Hotspot name** to rename the network SSID or set your network security.
- Touch **OK**.



The functions above may incur additional network charges from your network carrier. Extra fees may also be charged in roaming areas.

Private DNS

Touch to select private DNS mode.

Wireless emergency alerts


Turn on  to receive wireless emergency alert notifications.

4.4 Connected devices

VPN

Virtual private networks (VPNs) allow you to connect to the resources inside a secured local network from outside that network. VPNs are commonly deployed by corporations, schools, and other institutions so that their users can access local network resources when not inside that network, or when connected to a wireless network.

To add a VPN

- Touch **Settings > Connected devices > VPN** and then touch .
- On the screen that opens, follow your network administrator's instructions to configure each component of the VPN settings.
- Touch **SAVE**.

The VPN is added to the list on the VPN settings screen.



Before adding a VPN, you should set a screen lock for your phone.

To connect to/disconnect from VPN

To connect to a VPN:


- Touch **Settings > Connected devices > VPN**.
- The VPNs you have added are listed. Touch the VPN you want to connect with.
- In the dialog that opens, enter any requested credentials and touch **CONNECT**.

To disconnect from a VPN:


- Touch the VPN you want to disconnect from. In the dialog that opens, touch **DISCONNECT**.

To edit/delete a VPN

To edit a VPN:

- Touch **Settings > Connected devices > VPN**.
- The VPNs you have added are listed. Touch the  icon next to the VPN you want to edit.
- After editing, touch **SAVE**.

To delete a VPN:

- Touch the  icon next to the selected VPN, then touch **FORGET** to delete it.

Screen cast

You can use Cast to display your device's screen on your TV, and display content like TV shows, movies, photos, games, and websites from supported apps.

USB

With a USB cable, you can charge your device, transfer files or photos (MTP/PTP) between your phone and a computer.

To connect your phone to the computer

- Use the USB cable that came with your phone to connect the phone to a USB port on your computer. You will receive a notification that the USB is connected.
- Open the Notification panel and choose the way which you want to transfer files or touch **Settings > Connected devices > USB** to select. By default, **Charge this device** is selected.




Before using MTP, make sure that the driver (Windows Media Player 11 or higher version) has been installed.

Printing


Touch **Printing** to activate **Print services**. You can select your **Default print service**.

Chromebook⁽¹⁾

If your phone is linked to a Chromebook device, then you can text from your computer, share your phone's Internet connection and simplify unlocking etc.

Touch  to access more settings.

Nearby Share

Turn on  to active this function.

Your phone visibility setting controls who can share with you while your screen is unlocked.

Before using Nearby Share, you need:

- to have created and logged in to an account.
- Bluetooth and Location settings to be switched on.
- A temporary Wi-Fi hotspot to be switched on in order to share files.

Android Auto

After having created and logged in to your account, phone apps can then be used on your car screen.

4.5 Home screen & lock screen

With this menu, set your home apps, choose your favorite wallpapers and theme styles, etc.

⁽¹⁾ Features vary by device.

4.6 Display

Brightness level

Adjust screen brightness manually.

Adaptive brightness

Turn on  to adjust screen brightness automatically.

Dark light mode brightness

Adjust dark light mode screen brightness manually.

Dark mode

Empty screen space will become black in this mode, making it easier to look at your screen or read in dim light.

Sleep

Set screen timeout.

Font size

Slide to make the text on screen smaller or larger.

Auto-rotate screen

Select whether the screen rotates automatically or not.

Status bar

With this menu, you can turn on/off show network speed, select whether notification icons are folded and how the battery percentage is displayed.

More display settings

Screen saver

Touch to set current screen saver as Colors or Photos, as well as when to start the screen saver.

4.7 Sound & vibration


Use the Sound & vibration settings to configure many aspects of call ringtones, music, and other audio settings.

Phone ringtone & vibrate

Set your incoming call ringtone, turn on/off also vibrate for calls.

Do Not Disturb preferences

If you do not want to be disturbed by your phone or information ringtones during work or rest, you can set the **Do Not Disturb** mode.

Swipe down the Status bar twice to access the Quick Settings panel and tap  to turn on Do Not Disturb.

More sound settings

Set dial pad tones, screen locking sounds, touch sounds, vibrate on touch, emergency alerts.

4.8 Notifications

In Notification settings, you can set App icon badges, Lock screen quick settings, Notification light, etc.

4.9 Button & gestures

System navigation

Select your favorite navigation and button layout (only use for buttons navigation).

Gestures

To set some gestures for convenient use, such as flip to mute, 3 fingers screenshot, split-screen, etc.

Power key

To turn on/off the quick short functions about the Power key, as well as the Power key menu.

4.10 Advanced features

Remote Lock

Remote Lock will put your phone into lost mode by sending a text message containing a specific command. When activated in lost mode, the phone will be locked and the screen will show the dial button. Touching the dial button will contact your emergency contact directly.


Touch **SET UP NOW** to set options such as pattern, password, emergency contacts etc.

Game mode

In this mode, you can enable DO NOT DISTURB mode while playing, prevent accidental touches, and optimize game performance.


One-handed mode

Reduce the display area of the screen and operate your phone with one hand.

This function can be accessed in the Quick Settings panel by touching the  icon.

Screen Recorder

Set the video resolution and sound.

To activate Screen Recorder, touch the  icon in the Quick Settings panel.

Multiple User

The Multiple User feature lets you share your device with others while keeping your personal or work information private.

To improve privacy between users, each user should set up a screen lock. A screen lock prevents another user from accessing information in a different user profile.

4.11 Smart Manager

Smart Manager ensures your phone is operating in top form by automatically scanning and providing recommendations to optimize your phone to preserve battery levels, manage storage and protect against security threats.

Restricting auto-start apps can make the system run faster and extend battery life. To ensure applications that require push notification continue to work as expected, turn off «All automatically manage» to configure each applications individually.

You can also do some options manually for further optimization.

4.12 Digital Wellbeing & parental controls

In this menu you can find how much time you have spent on the phone and even on each app. You can customize the time limit for using the phone to ensure a healthy and balanced life.

In addition, parents are able to restrict their children's usage time to manage their browsing habits.

4.13 Security & biometrics

Screen lock

Select one method such as **Swipe**, **Pattern**, **PIN**, or **Password** to unlock the screen.

Fingerprint

Use your Fingerprint to unlock the screen or app.

Access to add fingerprint or turn on/off more options.

Face unlock

Face unlock allows you to unlock your device with your facial data. Set it according to the on-screen steps.

Ensure that you are facing the phone screen when using Face Unlock.

NOTE: you need to set a pattern, PIN, or password before using Face Unlock.

Smart Lock

Smart Lock keeps your device unlocked when it's safe with you and locked when it detects that it's been put down.

App lock

Apps lock can effectively protect your privacy by locking some apps with a pattern or fingerprint. Go to **Settings > Security > Apps lock** to set the lock format, lock time and choose the apps you want to lock.

Others

You can also set **Quick assistance**, **SIM card lock**, **Screen pinning**, etc.

4.14 Location

Tap to set whether to allow an app to access your device's location. You can set to allow continual access, or only while the app is in use.

4.15 Privacy

To protect your privacy, you can set an app to be allowed or forbidden access to your location, SMS, phone, etc. Also whether or not to show passwords, choose the activities and info that you want Google to save.

4.16 Apps

Touch to view details about the applications installed on your phone, to manage their data usage or force them to stop.

In the **Permission manager** menu of an application, you can grant permissions for the app, such as allowing the app to access your **Camera, Contacts, Location**, etc.

4.17 Storage

Enter **Settings > Storage** to check the usage of storage space and free up more when necessary.

4.18 Users & accounts

Touch to add, remove, and manage your email and other supported accounts. You can also use these settings to control the options for how all applications send, receive and synchronize data; i.e. if this is done automatically, according to a schedule for each app, or not at all.

Touch **Add account** to add an account for the selected app.

4.19 Google

Touch to configure your Google account and service settings.

4.20 System update

If you want to update the system, touch **Check for new system update** (refer to “**5 FOTA upgrade**”).

4.21 Accessibility

Use the Accessibility settings to configure any accessibility plug-ins you have installed on your phone.

4.22 System

About phone

View basic information for your phone such as model name, CPU, camera, resolution, etc.

You can also check legal information, build number, status and other specs.


Languages & input

Touch to configure language settings, the on-screen keyboard, voice input settings, pointer speed, etc.

Date & time

Use Date & time settings to customize your preferences for how date and time are displayed.

Backup

Turn on  to back up your phone's settings and other application data to Google servers. If you replace your phone, the settings and data you've backed up will be restored onto the new phone when you sign in with your Google account.

Reset

Tap to reset all network settings and app preferences, you won't lose your data with these settings.

If **Factory data reset** is selected, all data in your phone's internal storage will be erased, please back up your data before reset.

Regulatory & safety

Touch to view product information such as **Product model**, **Manufacturer name**, **IMEI**, **CU reference**, **Bluetooth Declaration ID**, etc.

5 FOTA upgrade

Use the FOTA (Firmware Over The Air) upgrade to update your phone's software.

To access updates, from the app list, touch **Settings > System updates**. Turn on data connection or Wi-Fi before searching for updates.

With Wi-Fi turned on, the system is able to discover if a new firmware version is available and if so, begin to download it automatically. Once finished, a pop up dialog will give you the option of updating your phone now or later.

If **Settings > System updates > Smart Updates > Install Smart Updates automatically** is turned off, a pop up dialog will ask if you want to download a new firmware version which the phone has discovered, or if you want to ignore it.

If you only have a cellular network connection, you will only receive a notification which will appear in the Status bar.

During FOTA downloading or updating, to avoid errors in locating the correct update packages, do not change your default storage location.

6 Accessories

Standard accessories

- Charger
- USB Cable
- SIM Card Pin
- Quick Start Guide
- Product safety and warranty information



Only use the TCL batteries, chargers, and accessories included along with your device.

7 Licenses



microSD Logo is a trademark.



The Bluetooth word mark and logos are owned by the Bluetooth SIG, Inc. and any use of such marks by TCL Communication Technology Holdings Limited. and its affiliates is under licence. Other trademarks and trade names are those of their respective owners.

TCL T781S/TCL T781SPP Bluetooth
Declaration ID D054212



The Wi-Fi Logo is a certification mark of the Wi-Fi Alliance.

Google, the Google logo, Android, the Android logo, Google Search™, Google Maps™, Gmail™, YouTube, Google Play Store, and Hangouts™ are trademarks of Google Inc.

The Android robot is reproduced or modified from work created and shared by Google and used according to terms described in the Creative Commons 3.0 Attribution License (the text will show when you touch **Google legal** in **Settings > System > About phone > Legal information**).

You have purchased a product which uses the open source (<http://opensource.org/>) programs mtd, msdosfs, netfilter/iptables and initrd in object code and other open source programs licensed under the GNU General Public Licence and Apache Licence.

You may download the source codes from <https://sourceforge.net/projects/tcl-mobile/files/>. The provision of the source code is free of charge from the internet.

8 1 YEAR LIMITED WARRANTY

For information on warranty of your device, visit the USA and Canada websites at <https://support.tcl.com/us-mobile-product-downloads/614427>



WARNING: Cancer and Reproduction Harm - www.P65Warnings.ca.gov.

Electronic Information

For more information on Electronic Recycling:

- 1) Visit TCL Electronic Recycling Program website at <https://www.tcl.com/us/en/mobile/accessibility-compliance/tcl-mobile-electronic-recycling-program.html/> or
- 2) Call TCL US Customer Support at 1-855-224-4228.

Recycling Information

We declare that the Post-consumer recycled and bio-based plastics content added to our product is 0.

Call Recycle Customer Support at 1-855-368-0829 for recycling instructions.



9 Troubleshooting

Before contacting the service center, here are some instructions to help you troubleshoot your device:

- For optimal operation, fully charge the battery.
- To improve the phone's performance, remove unnecessary files or apps on your phone.
- Update your phone's software via **Settings > System updates**.
- Reset your phone via **Settings > System > Reset > Factory data reset**. Another method is to hold down the **Power** key and the **Volume up** key at the same time when your phone is powered off. Release the power key when the device vibrates, then select **Wipe data / factory reset > Factory data reset** to reset. All your phone data will be lost permanently. It is strongly advised to fully back up your phone data before resetting.

and carry out the following checks:

My phone can't be switched on or is frozen

- When the phone can't be switched on, charge for at least 20 minutes to ensure the minimum battery power needed. Then switch it on again.
- When the phone falls into a loop during power on animation and the user interface can't be accessed, press and hold the **Power** key to reset. This eliminates any abnormal OS booting issues caused by third party applications.
- If neither method is effective, reset the phone by pressing the **Power** key and the **Volume up** key at the same time. Release the power key when the device vibrates, then select **Wipe data / factory reset > Factory data reset** to reset.

My phone has not responded for several minutes

- If your phone doesn't respond, turn off your phone by pressing and holding the **Power** key until it turns off and then restart it again.
- If it still doesn't work, reset the phone.

My phone turns off by itself

- Check that your screen is locked when you are not using your phone, and make sure that the **Power** key is not accidentally pressed while the screen is unlocked.
- Check the battery charge level.
- If it still doesn't work, reset the phone or update software.

My phone can't charge properly

- Make sure that you are using the TCL charger that comes with the phone.
- Make sure that your battery is not completely discharged; if the battery power has been empty for a long time, it may take around 20 minutes to display the battery charging indicator on the screen.
- Make sure that charging is carried out under normal conditions 0°C (32°F) to 40°C (104°F).
- When abroad, check that the voltage input is compatible.

My phone can't connect to a network or "No service" is displayed

- Try connecting to the network by moving to another physical location.
- Verify the network coverage with your carrier.
- Check with your carrier that your SIM card is valid.
- Try connecting at a later time if the network is overloaded.


My phone can't connect to the internet

- Make sure that the internet access service of your SIM card is available.
- Check your phone's internet connection settings.
- Make sure that you are in a place with network coverage.
- Try connecting at a later time or another location.

Invalid SIM card

- Make sure that the SIM card has been correctly inserted.
- Make sure that the chip on your SIM card is not damaged.
- Make sure that the service of your SIM card is available.

My phone can't make outgoing calls

- Make sure that you have dialled a valid number and have touched  .
- For international calls, check the country and area codes.
- Make sure that your phone is connected to a network, and the network is not overloaded or unavailable.
- Check your subscription status with your carrier (credit, SIM card valid, etc.).
- Make sure that you have not barred outgoing calls.
- Make sure that your phone is not in Airplane mode.

My phone can't receive incoming calls

- Make sure that your phone is switched on and connected to a network (check for overloaded or unavailable network).
- Check your subscription status with your carrier (credit, SIM card valid, etc.).
- Make sure that you have not forwarded incoming calls.
- Make sure that you have not barred certain calls.
- Make sure that your phone is not in Airplane mode.

The caller's name/number doesn't appear when a call is received

- Check that you have subscribed to this service with your carrier.
- Your caller may have concealed his name or number.

I can't find my contacts

- Make sure that your SIM card is not broken.
- Make sure that your SIM card is inserted properly.

The sound quality of the calls is poor

- Adjust the volume during a call by pressing the **Volume** key.
- Check the network strength. Move to a location with stronger signal strength.
- Make sure that the receiver, connector and speaker on your phone are clean.

I can't use the features described in the manual

- Check with your carrier to make sure that your subscription includes this service.
- Make sure that this feature doesn't require a TCL accessory.

When I select a number from my contacts, the number can't be dialed

- Make sure that you have correctly recorded the number in your contacts.
- Make sure that you have selected the country code when calling an international number.

I can't add a contact

- Make sure that your SIM card contacts are not full; delete some contacts or save the contacts to the phone.

My callers can't leave messages on my voicemail

- Contact your network carrier to check service availability.

I can't access my voicemail

- Make sure that your carrier's voicemail number is correctly entered in "Voicemail number".
- Try later if the network is busy.

I can't send and receive MMS

- Check your phone storage as it might be full.
- Contact your network carrier to check service availability and MMS parameters.
- Verify the server center number or your MMS profile with your carrier.
- The server center may be swamped. Try again later.

SIM card PIN locked

- Contact your network carrier to obtain the PUK (Personal Unblocking Key) code.

I can't connect my phone to my computer

- Check to make sure the USB port is not broken. If it's not working, try another USB port on your computer.

- Make sure USB drivers are properly installed.
- If you are using a Windows computer, make sure it supports MTP mode. If you are using a Mac, make sure to install Android File Transfer from www.android.com/filetransfer/.

I can't download new files

- Make sure that there is sufficient phone storage space for your download.
- Select the microSD™ card as the location to store downloaded files.
- Check your subscription status with your carrier.

The phone can't be detected by others via Bluetooth

- Make sure that Bluetooth is turned on and your phone is visible to other users.
- Make sure that the two phones are within Bluetooth's detection range.

The battery drains too fast

- Make sure that you follow the complete charge time (minimum 120 minutes).
- After a partial charge, the battery level indicator may not be exact. Wait for at least 20 minutes after removing the charger to obtain an exact indication.
- Adjust the brightness of screen as appropriate.
- Extend the email auto-check interval for as long as possible.
- Update news and weather information on manual demand, or increase their auto-check interval.
- Exit background-running applications if they are not being used for extended periods of time.
- Turn off Bluetooth, Wi-Fi, or GPS when not in use.

The phone becomes warm following prolonged calls, game playing, internet surfing or running other complex applications

- This heating is a normal consequence of the CPU handling excessive data. Ending the above actions will make your phone return to normal temperature.

After a factory data reset is performed, I can't use my phone without entering Google account credentials

- After a reset is performed, you must enter the original Google account credentials that were used on this phone.
- If you don't remember your Google account credentials, complete Google account recovery procedures.
- If you still cannot access your phone, apply to the authorized repair center, but remember that it will not be regarded as a warranty case.

I forgot some passwords/codes/keys on my phone

- Perform a factory data reset.
- If you still cannot access your phone, apply to the authorized repair center, but remember that it will not be regarded as a warranty case.

10 Specifications

Platform:

- SM4350-3-AB

OS:

- Android R, TCL ROM4.0

Memory:

- 128GB ROM + 4GB RAM

Dimensions (LxWxT):

- 165.77 x 75.83 x 9.06 mm

Weight:

- 200.5g

Display:

- 6.67" edge touch screen with 1080x2400 pixel screen resolution

Network:

- GSM: B2/3/5/8(1900/1800/ 850/900 MHz)
- UMTS: B1/2/5/8 (2100/1900/850/900 MHz)
- 4G: B2/4/ 5/12/13/46/48/66
- roaming: B3/7/20/28
- 5G NSA: n2(20 MHz)/5(20 MHz)/66(40 MHz)/77(PC3)
- mmWave: n260(39 GHz)/n261(28 GHz)

GPS:

- GPS (with A-GPS)

Connectivity:

- Bluetooth 5.1
- Wi-Fi 802.11 a/b/g/n/ac for 2.4GHz and 5GHz
- 3.5 mm audio jack
- Type-C USB 3.0

Camera:

- Rear Camera: 50MP (Main Camera) + 5MP (Super Wide) + 2MP (Macro)
- Front camera: 16MP

Audio & Video supported formats:

- Android default scope (AAC LC, AAC+, enhanced AAC+, AMR-NB, AMR-WB, FLAC, MP3, MIDI, Vorbis, PCM/WAVE)
- H.263,H.264 AVC,H.265 HEVC,MPEG-4 SP,VP8,VP9

Battery ⁽¹⁾:

- Capacity: 4500 mAh

Expansion Slot:

- microSD™ memory card
(Availability of microSD™ card up to 1TB)

Sensors:

- G-sensor
- Light Sensor
- Proximity Sensor
- E-Compass
- Gyro
- Barometer

Note: Specifications are subject to change without prior notice.

⁽¹⁾ The original battery has undergone rigorous safety inspections to meet qualification standards, the use of non-original batteries may be dangerous.

TCL | enjoy more.

For more information on how to use the phone, please go to tcl.com and download the complete user manual. The website will also provide you with answers to frequently asked questions.